

# VEGA X

## FLAT TOP BARGE



### PRINCIPAL PARTICULARS

VESSEL TYPE	FLAT TOP BARGE
SHAPE	SHIP SHAPE
YEAR OF BUILT	2014
PLACE OF BUILT	CHINA
FLAG	PANAMA
CLASS	RINA
GRT	4,270 TONS
NRT	1,281 TONS

### PRINCIPAL DIMENSIONS

LOA	100.65 MTRS
BREADTH MOULDED	27.45 MTRS
DEPTH MOULDED	6.41 MTRS
DRAFT MOULDED	5.086 MTRS

### CARGO CAPACITY

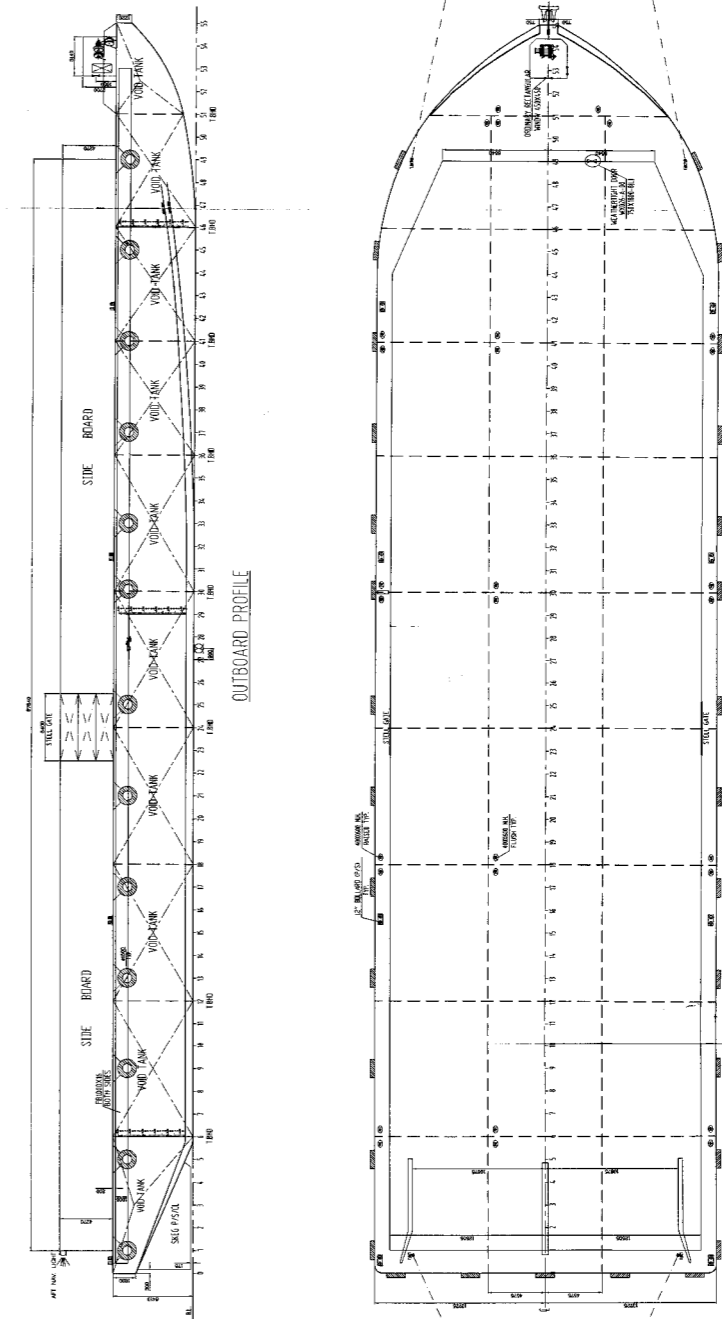
DEADWEIGHT	10,490 TONS
SUMMER	10,000 TONS
TROPICAL	10,299 TONS

### DECK PARTICULARS

CLEAR DECK AREA	90.0 MTRS X 24.50 MTRS
DECK STRENGTH	15 T/M2

### OTHER PARTICULARS

DOORS	BOTH SIDES, MIDSHIP
SIDEWALL HEIGHT	4 MTRS
ANCHOR	YES - FORWARD



**PRINCIPAL DIMENSIONS**

LOA (M/D)	100.65M (330FT)
BREADTH (M/D)	27.45M (90FT)
DEPTH (M/D)	6.41 M (21FT)
DECK LOADING:	15T/M <sup>2</sup>
COAMING LENGTH	87.84M
BREADTH	25.01M
HEIGHT	4.22M
NOTATION:	ABS +A1 BARGE

NAME	VEGA X
TYPE	FLAT TOP BARGE
YEAR BUILT	2014
PLACE BUILT	CHINA
FLAG	PANAMA
CLASS	RINA
GRT	4,270
NRT	1,281
DESIGNER	ABS
DATE	12 Jan 2013